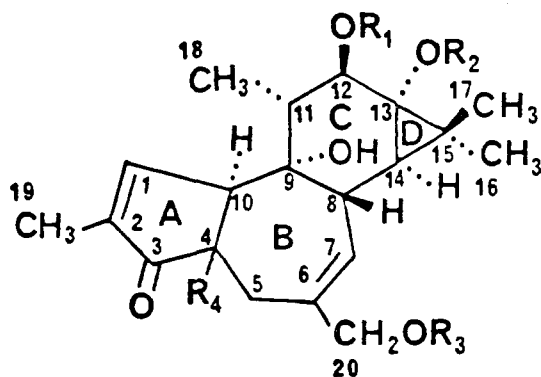


17. R. G. S. RITCHIE, N. CYR, B. KORSCH, H. J. KOCH and A. S. PERLIN, *Can. J. Chem.*, **53**, 1424 (1975).  
 18. K. BOCK and C. PEDERSEN, *J. Chem. Soc.*, Perkin II, 293 (1974).  
 19. K. BOCK and C. PEDERSEN, *Acta Chem. Scand.*, B2g, 258 (1975).  
 20. P. A. J. GORIN and M. MAZUREK, *Canadian J. Chem.*, **53**, 1212 (1975).  
 21. T. REICHSTEIN and E. WEISS, *Advances in Carbohydrate Chemistry*, **17**, 65 (1962).  
 22. C. S. HUDSON and J. M. JOHNSON, *J. Org. Chem.* **37**, 2748 (1951).

## ERRATA

A. Douglas Kinghorn: Characterization of an irritant 4-deoxyphorbol diester from *Euphorbia tirucalli*. Vol. 42, No. 1, p. 113.

R<sub>2</sub> for structure 2 should be -H instead of -OH. The structure should be positioned as follows:



	R <sub>1</sub>	R <sub>2</sub>	R <sub>3</sub>	R <sub>4</sub>
1	$\begin{matrix} Z & E \\ -COCH=CH-CH=CHCH_2CH_2CH_3 \\ 1' \ 2' \ 3' \ 4' \ 5' \ 6' \ 7' \ 8' \end{matrix}$	-COCH <sub>3</sub>	-H	β-H
2	$\begin{matrix} Z & E \\ -COCH=CH-CH=CHCH_2CH_2CH_3 \\ 1' \ 2' \ 3' \ 4' \ 5' \ 6' \ 7' \ 8' \end{matrix}$	-H	-H	α-H
3	-COCH <sub>3</sub>	-COCH <sub>3</sub>	-COCH <sub>3</sub>	α-H

L. H. Zalkow, R. N. Harris, III, and N. I. Burke: The lower terpenoids of *Isocoma wrightii*. Vol. 42, No. 1, pp. 96-102.

The correct spelling for the compound represented by structure 2 is modhephene.